

stream24 Webcasting KG

Bismarckstr. 5
D-91054 Erlangen
Germany

☎ Phone +49 9131 - 920 18 60
☎ Fax +49 9131 - 920 18 67
✉ Email info@stream24.com
🌐 Web www.stream24.com

Software datasheet #VDJ (Windows 2000 / XP / Vista)



Internet-Radio with Virtual DJ
Destination server: Shoutcast / Icecast

Rev. 1.1 - 18.08.2008

Rev.	Author	Release	Comments/Changes
1.0	A. Bardonski 15.10.2006	S. Kelso 20.10.2006	Translation of German revision 1.1
1.1	A. Bardonski 16.08.2008	K. Werner 18.08.2008	Text changes, destination servers in one document, Virtual DJ 5.2 Trail

1. Introduction

VirtualDJ is a professional mixing software for MP3 music files in turntable look developed by the company Atomix Productions.

VirtualDJ supports MP3-streams via Shoutcast and Icecast server, the LAME MP3-encoder integrated. The selection of Ogg encoder for Icecast is possible as well.

The player contains a lot of features and interfaces for the perfect DJ-gig, but with this tutorial we can't go into details, but we are pleased to show you step by step how to start broadcasting with VirtualDJ after its proper installation.

2. Software download and installation

Over the homepage of the software producer you can download a trial version for free. The regular license after test period is with cost.

- Download VirtualDJ: #S6*

*The download link for this application you will find on our main page under "Help | Software".

Please download and install the software on your computer, then you can go over to the next page and step 3.

3. Configuration and handling

3.1 Run program

Start VirtualDJ in „Power audio interface“

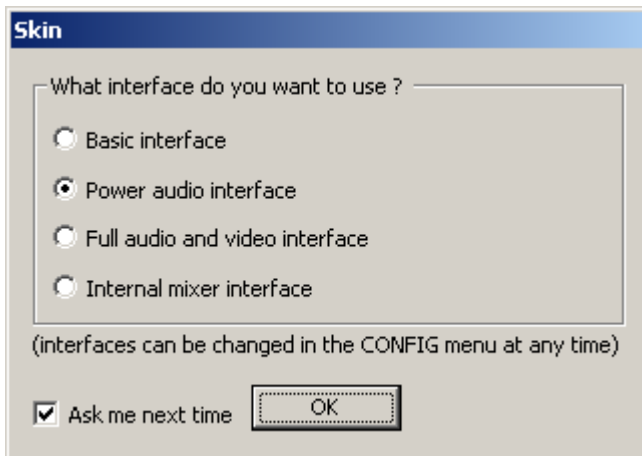


Fig. 1 VirtualDJ Skin selection

and you will get (depends on Windows display design) the following screen:



Fig. 2 VirtualDJ Player start screen

3.2 Broadcast module

Change now to RECORD Menu and go further to the BROADCAST module:

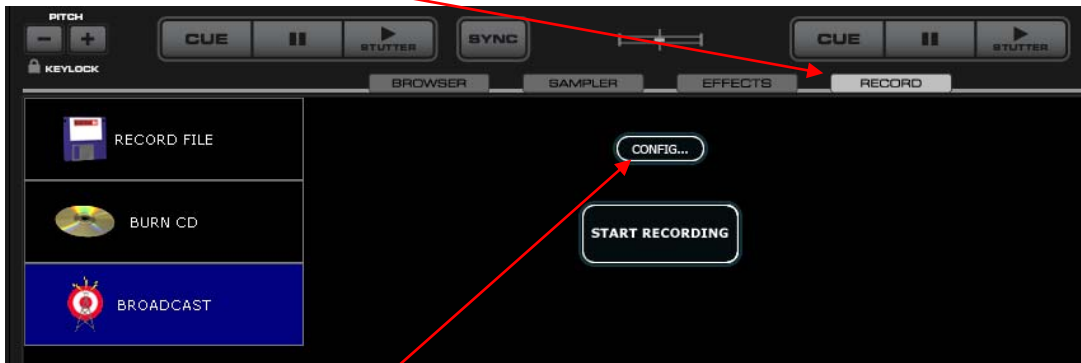


Fig. 3 VirtualDJ Record (part)

Click on [Config...] and you will get the following window:

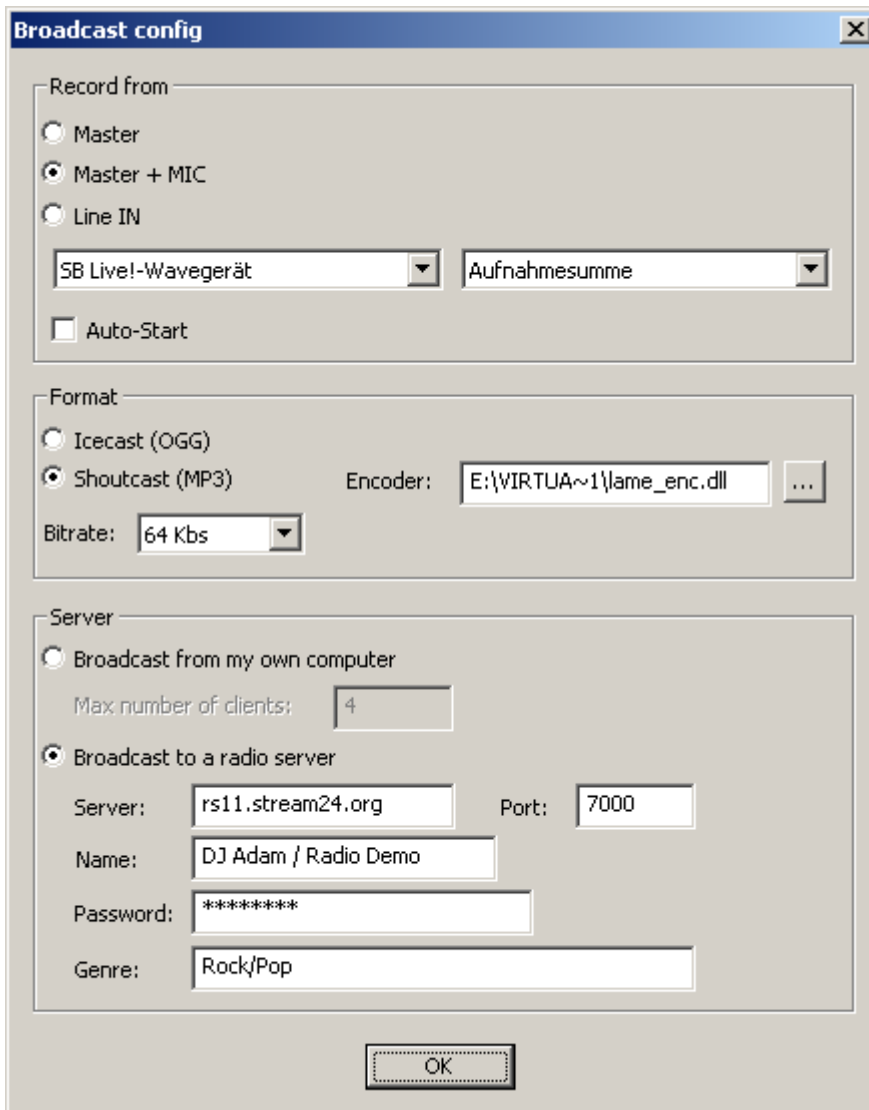


Fig. 4 VirtualDJ Broadcast config

- 3.3 Configuration of the broadcast module
Continue with the configuration according to your data.

Record from

Select: [Master + MIC](#). In this case your microphone is selected as source as well and your voice is broadcasted to the server.

Select your installed soundcard and the input source for the stream, i.e. the record control.

Note: The name of the record control varies depending on the soundcard type and drivers. Here in our example (Soundblaster Live) it calls „Aufnahmesumme“ (i.e. German for recording sum). On other systems the name of the record control could also be: “What U Hear”, “Total”, or “Stereo-Mix”.

Format

Choose [Shoutcast \(MP3\)](#) for Shoutcast as well as for Icecast server and enter your the bitrate you like to stream.

Please consider at this step to select at most this bitrate which you have booked. Exceeding the bitrate, your stream server is killed automatically by the stream24 control system.

Server

As destination please select [Broadcast to a radio server](#). For [Server](#), [Port](#) and [Password](#) enter your individual stream data.

You will find these data in the customer area under link “Server configuration”. There you can also set or change the Stream-Password anytime by yourself.

Name: Name of the respective speaker or DJ, title of the broadcast *

Genre: Type of your music style, e. g. Rock/Pop, 80s or Oldies

Using Icecast Server

The format [Icecast \(OGG\)](#) should not be used, we recommend to stream in MP3 and not in OGG format. So please select also [Shoutcast \(MP3\)](#) when using Icecast as destination server.

The stream24 Icecast servers are preconfigured as shoutcast-compatible, you just need to keep the default mountpoint “/stream” in the server configuration because this VirtualDJ configuration does not provide a field to enter an individual mountpoint name.

3.4 Start encoder and broadcast

Just load few titles into the playlist and start the playback. Return then back to the Record Module.

Click on the [START RECORDING] Button, to start the broadcast to the server.



Fig. 5 VirtualDJ Record Start (part)

On successful connection to the stream server you will see how the broadcast time counter starts to run.



Fig. 6 VirtualDJ Broadcast (part)

You get the error message „** Broadcast ** Server answered: Invalid password“, if you have typed a wrong password.

Note: At the same time only one DJ can broadcast. If the stream server is busy, no other can connect to.

Further you can read on our main page or inside the customer area how to create player links to integrate them as tune-in links on your website.

That's all! We wish you success and a lot of fun and don't hang the head if everything doesn't work perfectly on first go...